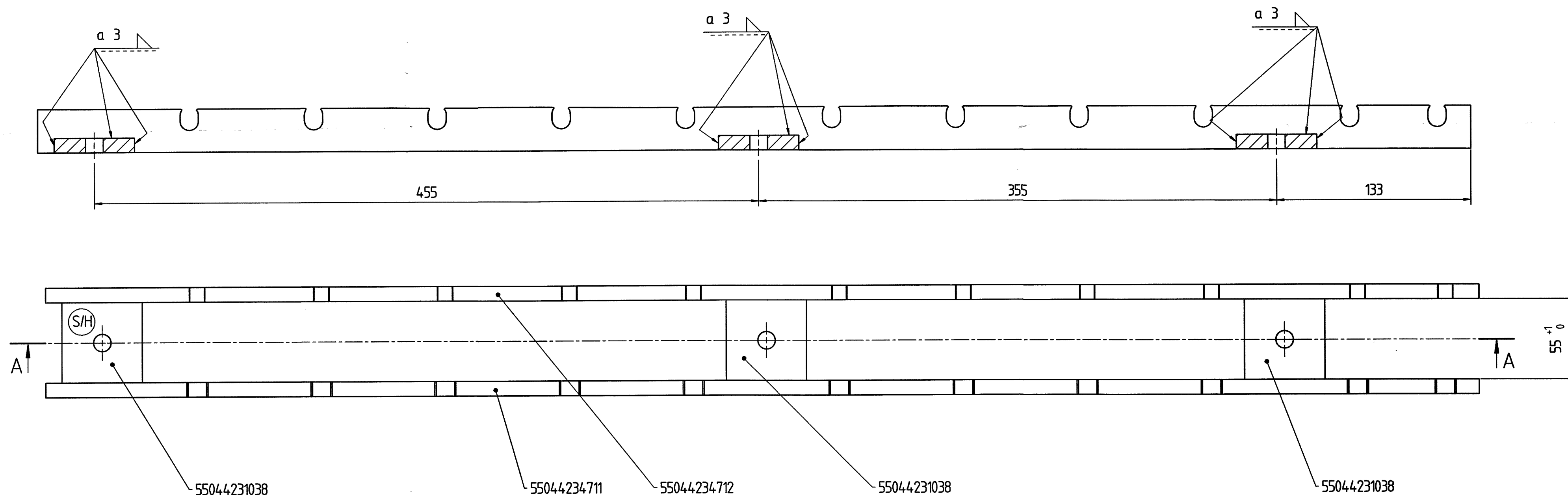


A-A 1:2

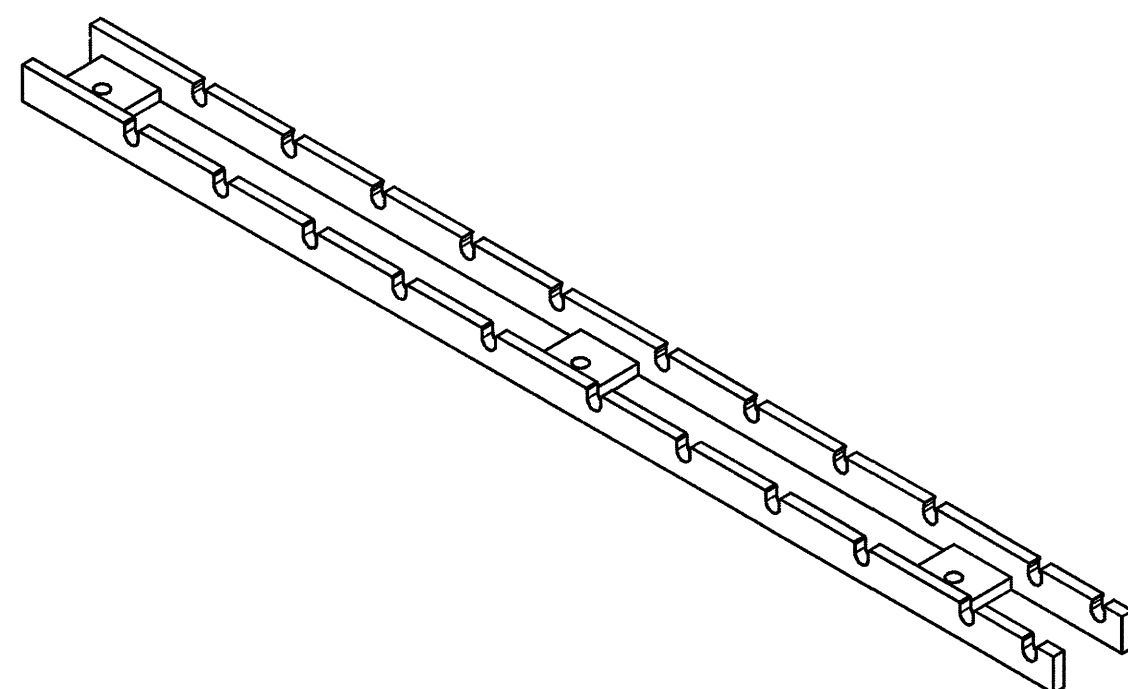


ARCHIV

DIN 50979-ZnFe12/Fn/T2



(02)

LM/18/00036



Obecná skupina pro hodnocení
Poloha referenčních značek svařence
Postup při svařování WPS
Specifikace postupu svařování WPS
Test specifikace
Požadavky na výrobce

(02)	General Assessment groups	EN ISO 5817-C
	Position for welder reference markers	EN
rence	Welding procedure specification WPS	50988839001
WPS	Stud welding procedure specification WPS	50988839006
	Specification test	50988839800
	Requirements to manufacturers	WN 10570-1

First angle projection			02	change the coatings to Cr(VI)-free coatings	T92691			
				updated weld sticker				
General tolerance (GT) in mm Size range			SMENA POVRCHOVE UPRAVY					
			AKTUALIZOVAN STAROVCICI RAMECEK					
<div><div><div>> 30 > 120 > 400 > 1000</div><div>≤ 30 ≤ 120 ≤ 400 ≤ 1000</div></div></div>			Index	alteration		Change no	Fit	Toler
			PPAP -					
GT coarse			Inspection dim. <input type="radio"/> Aux. dim. ()		Material:			Weight: in kg 5.022
<div><div>L12234</div><div>Δ1246</div></div>			Date Drawn 11.04.2017		Blank no:			
Lengths (L) and angle (⊥/∠)= ±GT			Checked 20.06.2017		Title: assy.			Prod. Scale 1:2 1:5
			Auth'd 20.07.2017		rail			
Tolerance Symbols ISO 1101			M.check 24.07.2017					Sheet: 1 of: 1
<div><div>○ roundness = 1/2σ-Tol.</div><div>- ▭ straightness/flatness = AT</div><div>⊙ concentricity/run out = AT</div><div>≡ symmetry = AT</div><div>// parallelism = AT</div><div>⊕ position = AT</div></div>					Drawing number /			
Languages:					/			55044200616
DE:EN								
			Confidential document					55044200614
			Refer to protection notice ISO 16061		Repl.			

Released

6 1896337/D2D/001/02

A